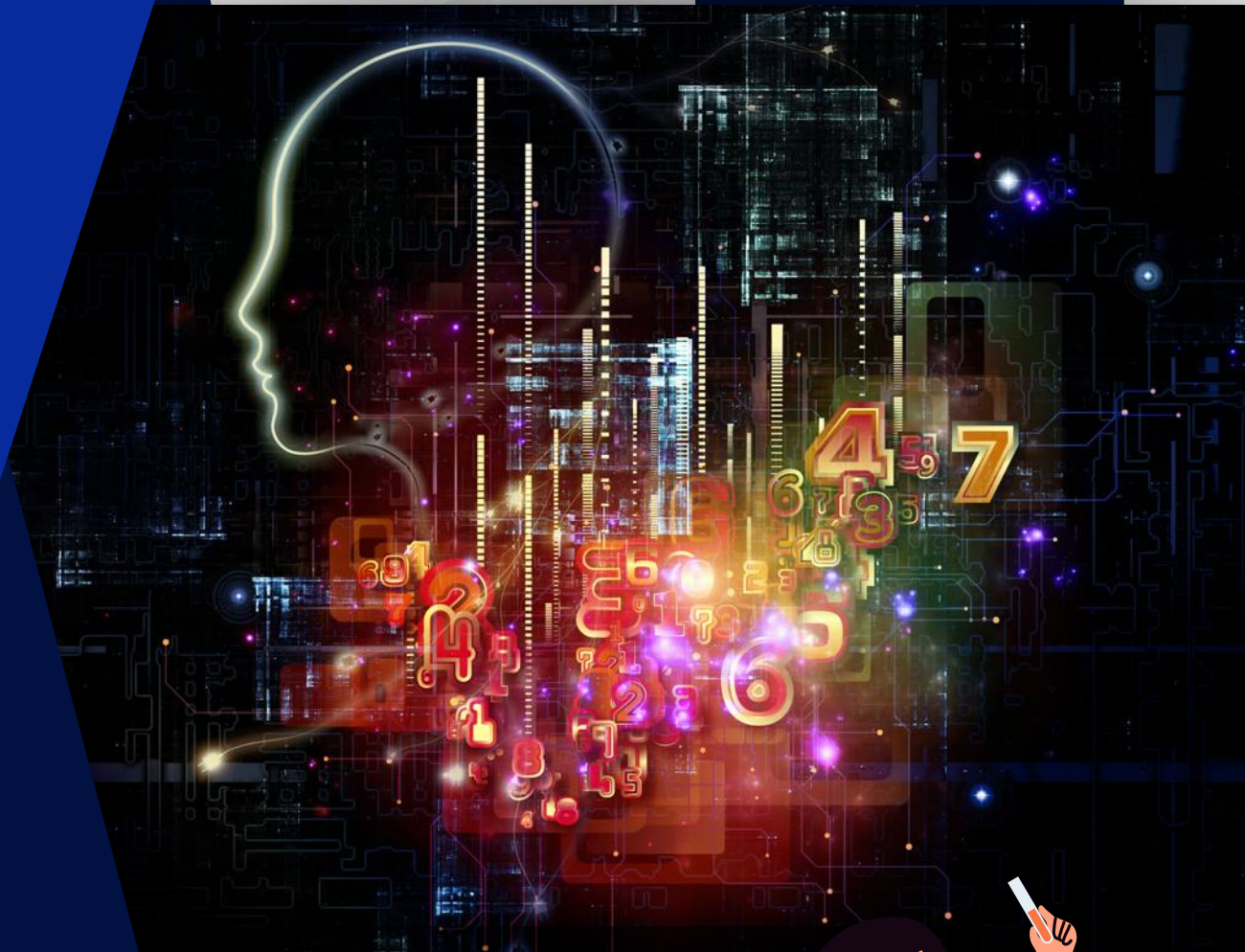




**TALENT & SKILLS  
DEVELOPMENT**



# <sup>2025</sup> **STEAM** **EDUCATION**

"IGNITE CURIOSITY, INNOVATE THE FUTURE!"

[www.talentandskillsdevelopment.com](http://www.talentandskillsdevelopment.com)



**GRADE  
5-6**

**Q.No:1:- What is the process by which plants make their food using sunlight?**

- |                 |                    |
|-----------------|--------------------|
| (A) Respiration | (B) Photosynthesis |
| (C) Digestion   | (D) Transpiration  |

**Q.No:2:- Which planet is known as the "Red Planet"?**

- |           |             |
|-----------|-------------|
| (A) Venus | (B) Earth   |
| (C) Mars  | (D) Jupiter |

**Q.No:3:- What is the boiling point of water in Celsius?**

- |           |           |
|-----------|-----------|
| (A) 90°C  | (B) 100°C |
| (C) 110°C | (D) 120°C |

**Q.No:4:- Which of these animals is a mammal?**

- |               |            |
|---------------|------------|
| (A) Shark     | (B) Whale  |
| (C) Crocodile | (D) Turtle |

**Q.No:5:- Which of the following is a gas that plants need to perform photosynthesis?**

- |              |                    |
|--------------|--------------------|
| (A) Oxygen   | (B) Hydrogen       |
| (C) Nitrogen | (D) Carbon dioxide |

**Q.No:6:- What is the main source of energy for the Earth?**

- |          |           |
|----------|-----------|
| (A) Moon | (B) Wind  |
| (C) Sun  | (D) Ocean |

**Q.No:7:- Which organ in the human body pumps blood?**

- |           |             |
|-----------|-------------|
| (A) Brain | (B) Stomach |
| (C) Heart | (D) Lungs   |

**Q.No:8:- What is the hardest natural substance on Earth?**

- |          |             |
|----------|-------------|
| (A) Gold | (B) Diamond |
| (C) Iron | (D) Silver  |

**Q.No:9:- Which of these is an example of a chemical change?**

- |                  |                    |
|------------------|--------------------|
| (A) Ice melting  | (B) Water boiling  |
| (C) Wood burning | (D) Water freezing |

**Q.No:10:- What do we call the process by which a liquid turns into a gas?**

- |                 |                  |
|-----------------|------------------|
| (A) Freezing    | (B) Melting      |
| (C) Evaporation | (D) Condensation |

**Q.No:11:- Which of the following animals is a reptile?**

- |           |          |
|-----------|----------|
| (A) Snake | (B) Frog |
| (C) Fish  | (D) Bird |

**Q.No:12:- What do we call the solid form of water?**

- |            |         |
|------------|---------|
| (A) Liquid | (B) Ice |
| (C) Vapor  | (D) Gas |

**Q.No:13:- Which gas do we breathe in to survive?**

- |                    |              |
|--------------------|--------------|
| (B) Carbon dioxide | (A) Oxygen   |
| (D) Hydrogen       | (C) Nitrogen |

**Q.No:14:- What is the main function of the roots of a plant?**

- |                        |                                   |
|------------------------|-----------------------------------|
| (A) To absorb sunlight | (B) To produce flowers            |
| (C) To make food       | (D) To absorb water and nutrients |

**Q.No:15:- Which of these is a renewable energy source?**

- |          |                  |
|----------|------------------|
| (A) Coal | (B) Solar energy |
| (C) Oil  | (D) Natural gas  |

**Q.No:16:- Which part of the plant is responsible for making food?**

- |            |             |
|------------|-------------|
| (A) Roots  | (B) Stem    |
| (C) Leaves | (D) Flowers |

**Q.No:17:- What is the unit of measurement for temperature?**

- |           |             |
|-----------|-------------|
| (A) Gram  | (B) Liter   |
| (C) Meter | (D) Celsius |

**Q.No:18:- Which of the following is not a planet in our solar system?**

- |           |          |
|-----------|----------|
| (A) Earth | (B) Mars |
| (C) Pluto | (D) Moon |

**Q.No:19:- What is the primary source of energy for the human body?**

- |            |                   |
|------------|-------------------|
| (A) Water  | (B) Carbohydrates |
| (C) Oxygen | (D) Proteins      |

**Q.No:20:- Which of the following animals is warm-blooded?**

- |           |                |
|-----------|----------------|
| (A) Fish  | (B) Reptiles   |
| (C) Birds | (D) Amphibians |

**Q.No:21:- What is the force that pulls objects toward the Earth?**

- |               |              |
|---------------|--------------|
| (A) Gravity   | (B) Friction |
| (C) Magnetism | (D) Tension  |

**Q.No:22:- Which of these is an example of a liquid?**

- |          |         |
|----------|---------|
| (A) Rock | (B) Oil |
| (C) Wood | (D) Air |

**Q.No:23:- Which layer of the Earth is the hottest?**

- |                |                |
|----------------|----------------|
| (A) Crust      | (B) Mantle     |
| (C) Outer core | (D) Inner core |

**Q.No:24:- What is the main function of the leaves in a plant?**

- |   |                         |
|---|-------------------------|
| (A) To make food through photosynthesis | (B) To absorb nutrients |
| (C) To support the plant                | (D) To store water      |

**Q.No:25:- Which of these animals lays eggs?**

- |          |              |
|----------|--------------|
| (A) Dog  | (B) Cat      |
| (C) Frog | (D) Elephant |

**Q.No:26:- Which of the following is a solid form of carbon dioxide?**

- |             |           |
|-------------|-----------|
| (A) Ice     | (B) Snow  |
| (C) Dry ice | (D) Water |

**Q.No:27:- What do we call the change of state from a solid to a liquid?**

- |              |                  |
|--------------|------------------|
| (A) Freezing | (B) Melting      |
| (C) Boiling  | (D) Condensation |

**Q.No:28:- Which of the following is not a form of precipitation?**

- |          |          |
|----------|----------|
| (A) Rain | (B) Snow |
| (C) Hail | (D) Wind |

**Q.No:29:- Which of the following does not belong to the group of living things?**

- |          |               |
|----------|---------------|
| (A) Tree | (B) Sunflower |
| (C) Rock | (D) Mushroom  |

**Q.No:30:- Which element is essential for the process of photosynthesis in plants?**

- |            |              |
|------------|--------------|
| (A) Carbon | (B) Nitrogen |
| (C) Oxygen | (D) Hydrogen |

**Q.No:31:- Which part of the human body controls all the functions of the body?**

- |           |             |
|-----------|-------------|
| (A) Brain | (B) Heart   |
| (C) Lungs | (D) Stomach |

**Q.No:32:- What is the main purpose of the human skeleton?**

- |                     |                                  |
|---------------------|----------------------------------|
| (A) To store energy | (B) To protect internal organs   |
| (C) To digest food  | (D) To regulate body temperature |

**Q.No:33:- Which of these is the largest organ in the human body?**

- |           |           |
|-----------|-----------|
| (A) Heart | (B) Brain |
| (C) Skin  | (D) Lungs |

**Q.No:34:- What is the process by which an insect changes from an egg to an adult?**

- |                  |                   |
|------------------|-------------------|
| (A) Growth       | (B) Metamorphosis |
| (C) Reproduction | (D) Respiration   |

**Q.No:35:- What is the primary function of white blood cells?**

- |                         |                                  |
|-------------------------|----------------------------------|
| (A) To carry oxygen     | (B) To digest food               |
| (C) To fight infections | (D) To regulate body temperature |

**Q.No:36:- What type of energy is stored in food?**

- |                     |                       |
|---------------------|-----------------------|
| (A) Kinetic energy  | (B) Thermal energy    |
| (C) Chemical energy | (D) Electrical energy |

**Q.No:37:- What is the main reason for seasons on Earth?**

- |                                   |                      |
|-----------------------------------|----------------------|
| (A) Earth's distance from the Sun | (B) Earth's rotation |
| (C) Earth's tilt on its axis      | (D) The Sun's heat   |

**Q.No:38:- Which of the following materials is a conductor of electricity?**

- |            |             |
|------------|-------------|
| (A) Wood   | (B) Plastic |
| (C) Rubber | (D) Metal   |

**Q.No:39:- Which of these is a non-renewable resource?**

- |                  |                 |
|------------------|-----------------|
| (A) Solar energy | (B) Wind energy |
| (C) Coal         | (D) Biomass     |

**Q.No:40:- Which of the following is a non-living thing?**

- |          |          |
|----------|----------|
| (A) Bird | (B) Tree |
| (C) Rock | (D) Fish |

**Q.No:41:- What is the function of the roots in a plant?**

- |                        |                                   |
|------------------------|-----------------------------------|
| (A) To make food       | (B) To absorb water and nutrients |
| (C) To produce flowers | (D) To hold the plant upright     |

**Q.No:42:- Which animal is known for its ability to change colors?**

- |               |              |
|---------------|--------------|
| (A) Chameleon | (B) Kangaroo |
| (C) Elephant  | (D) Horse    |

**Q.No:43:- Which of these planets has the most moons?**

- |           |            |
|-----------|------------|
| (A) Earth | (B) Saturn |
| (C) Mars  | (D) Venus  |

**Q.No:44:- What type of rock is formed by cooling and solidification of lava or magma?**

- |                 |                 |
|-----------------|-----------------|
| (A) Sedimentary | (B) Metamorphic |
| (C) Igneous     | (D) Fossilized  |

**Q.No:45:- What is the smallest unit of life?**

- |              |            |
|--------------|------------|
| (A) Organ    | (B) Cell   |
| (C) Organism | (D) Tissue |

**Q.No:46:- Which of these elements is essential for the human body and can be found in salt?**

- |              |               |
|--------------|---------------|
| (A) Oxygen   | (B) Potassium |
| (C) Hydrogen | (D) Sodium    |

**Q.No:47:- What is the main purpose of leaves in photosynthesis?**

- |                        |                       |
|------------------------|-----------------------|
| (A) To absorb sunlight | (B) To absorb water   |
| (C) To store food      | (D) To produce oxygen |

**Q.No:48:- Which of these types of energy is produced by the Sun?**

- |                       |                    |
|-----------------------|--------------------|
| (A) Electrical energy | (B) Nuclear energy |
| (C) Solar energy      | (D) Wind energy    |

**Q.No:49:- Which of these animals can fly?**

- (A) Dog                      (B) Fish
- (C) Bird                     (D) Elephant

**Q.No:50:- What is the main purpose of the digestive system?**

- (A) To circulate blood                      (B) To break down food for energy
- (C) To protect the body                     (D) To store nutrients

**Q.No:51:- What is the brain of a computer called?**

- (A) Monitor                      (B) Keyboard
- (C) CPU                          (D) Mouse

**Q.No:52:- What does "WWW" stand for in a web address?**

- (A) Web World Website                      (B) Wide Web Window
- (C) World Wide Web                          (D) Wireless Web Work

**Q.No:53:- Which device is used to print documents?**

- (A) Scanner                      (B) Printer
- (C) Keyboard                     (D) Speaker

**Q.No:54:- What is the main purpose of a mouse?**

- (A) To type text                      (B) To move the cursor and select items
- (C) To print documents                     (D) To store data

**Q.No:55:- What type of energy does a solar panel use?**

- (A) Wind energy                      (B) Water energy
- (C) Chemical energy                     (D) Solar energy

**Q.No:56:- Which of the following is an input device?**

- (A) Monitor                      (B) Printer
- (C) Keyboard                     (D) Speaker



**Q.No:57:- Which of these is NOT a type of computer?**

- |                |               |
|----------------|---------------|
| (A) Desktop    | (B) Laptop    |
| (C) Smartphone | (D) Microwave |

**Q.No:58:- What does "USB" stand for?**

- |                          |                         |
|--------------------------|-------------------------|
| (A) Universal Serial Bus | (B) United System Board |
| (C) Ultra Speed Band     | (D) Unique Software Box |

**Q.No:59:- Which device is used to listen to sounds from a computer?**

- |              |             |
|--------------|-------------|
| (A) Monitor  | (B) Speaker |
| (C) Keyboard | (D) Printer |

**Q.No:60:- What part of the computer shows the output?**

- |             |              |
|-------------|--------------|
| (A) Monitor | (B) Keyboard |
| (C) Mouse   | (D) CPU      |

**Q.No:61:- Which key is used to erase text on a computer?**

- |              |           |
|--------------|-----------|
| (A) Spacebar | (B) Shift |
| (C) Delete   | (D) Enter |

**Q.No:62:- What do we call a machine that makes copies of documents?**

- |                 |               |
|-----------------|---------------|
| (A) Scanner     | (B) Printer   |
| (C) Photocopier | (D) Projector |

**Q.No:63:- Which type of computer is small and easy to carry?**

- |                   |             |
|-------------------|-------------|
| (A) Mainframe     | (B) Desktop |
| (C) Supercomputer | (D) Laptop  |

**Q.No:64:- What is the full form of AI in technology?**

- |                             |                           |
|-----------------------------|---------------------------|
| (A) Artificial Intelligence | (B) Automated Internet    |
| (C) Advanced Innovation     | (D) Automatic Interaction |

**Q.No:65:- Which of the following is a web browser?**

- |                      |                     |
|----------------------|---------------------|
| (A) Microsoft Word   | (B) Google Chrome   |
| (C) VLC Media Player | (D) Adobe Photoshop |

**Q.No:66:- Which of these is an example of software?**

- |                |              |
|----------------|--------------|
| (A) Hard disk  | (B) RAM      |
| (C) Windows 10 | (D) Keyboard |

**Q.No:67:- What is an email used for?**

- |                     |                                    |
|---------------------|------------------------------------|
| (A) Watching videos | (B) Sending and receiving messages |
| (C) Playing music   | (D) Making phone calls             |

**Q.No:68:- Which one is NOT an example of an operating system?**

- |              |             |
|--------------|-------------|
| (A) Windows  | (B) Android |
| (C) Facebook | (D) iOS     |

**Q.No:69:- What is used to move a computer screen up and down?**

- |                |                |
|----------------|----------------|
| (A) Enter key  | (B) Scroll bar |
| (C) Delete key | (D) Shift key  |

**Q.No:70:- What type of software is Microsoft Word?**

- |                      |                    |
|----------------------|--------------------|
| (A) Video player     | (B) Word processor |
| (C) Operating system | (D) Web browser    |

**Q.No:71:- What is the main function of antivirus software?**

- |  |                                |
|--|--------------------------------|
| (A) To protect the computer from viruses | (B) To increase computer speed |
| (C) To edit videos                       | (D) To play music              |

**Q.No:72:- What is the cloud used for in technology?**

- |                          |                            |
|--------------------------|----------------------------|
| (A) To store data online | (B) To print documents     |
| (C) To play games        | (D) To browse the internet |

**Q.No:73:- What do we call a picture that represents a file or app on a computer screen?**

- (A) Symbol
- (B) Logo
- (C) Icon
- (D) Window

**Q.No:74:- Which device is needed to connect a computer to the internet?**

- (A) Printer
- (B) Router
- (C) Scanner
- (D) USB drive

**Q.No:75:- What does a search engine help you do?**

- (A) Send emails
- (B) Find information online
- (C) Watch movies
- (D) Create documents

**Q.No:76:- Which of the following is NOT a social media platform?**

- (A) Facebook
- (B) Instagram
- (C) Microsoft Excel
- (D) Twitter

**Q.No:77:- What does a firewall do?**

- (A) Protects the computer from hackers
- (B) Cools the computer
- (C) Speeds up downloads
- (D) Cleans the keyboard

**Q.No:78:- What is the purpose of a QR code?**

- (A) To scan barcodes
- (B) To store information
- (C) To unlock phones
- (D) To print documents

**Q.No:79:- Which one is NOT a programming language?**

- (A) Python
- (B) Java
- (C) HTML
- (D) Photoshop

**Q.No:80:- What does Bluetooth allow you to do?**

- (A) Print documents
- (B) Transfer data wirelessly
- (C) Browse the internet
- (D) Increase battery life

**Q.No:81:- Which of these is NOT a computer brand?**

- |           |          |
|-----------|----------|
| (A) Apple | (B) Dell |
| (C) Nike  | (D) HP   |

**Q.No:82:- What do we call a device that connects multiple computers together?**

- |               |              |
|---------------|--------------|
| (A) USB drive | (B) Router   |
| (C) Monitor   | (D) Keyboard |

**Q.No:83:- What is coding?**

- |  |                         |
|--|-------------------------|
| (A) Writing instructions for computers | (B) Playing video games |
| (C) Watching movies                    | (D) Sending emails      |

**Q.No:84:- Which key is used to start a new line in a text document?**

- |              |           |
|--------------|-----------|
| (A) Spacebar | (B) Enter |
| (C) Shift    | (D) Ctrl  |

**Q.No:85:- What is the smallest unit of data in a computer?**

- |              |              |
|--------------|--------------|
| (A) Bit      | (B) Byte     |
| (C) Megabyte | (D) Kilobyte |

**Q.No:86:- What is an example of a smart home device?**

- |              |                      |
|--------------|----------------------|
| (A) Laptop   | (B) Smart thermostat |
| (C) Keyboard | (D) Printer          |

**Q.No:87:- Which one is NOT an e-commerce website?**

- |                 |             |
|-----------------|-------------|
| (A) Amazon      | (B) eBay    |
| (C) Google Docs | (D) Walmart |

**Q.No:88:- What is the purpose of a CAPTCHA?**

- |                                  |                           |
|----------------------------------|---------------------------|
| (A) To verify humans from robots | (B) To speed up browsing  |
| (C) To make computers smarter    | (D) To send emails faster |

**Q.No:89:- Which of the following can store the most data?**

- |                         |               |
|-------------------------|---------------|
| (A) Floppy disk         | (B) USB drive |
| (C) External hard drive | (D) CD        |

**Q.No:90:- What do you use to type on a computer?**

- |             |              |
|-------------|--------------|
| (A) Mouse   | (B) Keyboard |
| (C) Monitor | (D) Speaker  |

**Q.No:91:- What do we use to record sounds?**

- |                |             |
|----------------|-------------|
| (A) Scanner    | (B) Monitor |
| (C) Microphone | (D) Mouse   |

**Q.No:92:- What is Wi-Fi used for?**

- |                        |                                |
|------------------------|--------------------------------|
| (A) Charging phones    | (B) Connecting to the internet |
| (C) Printing documents | (D) Storing data               |

**Q.No:93:- What is a selfie?**

- |  |                      |
|--|----------------------|
| (A) A personal photo taken by yourself | (B) A computer virus |
| (C) A type of email                    | (D) A website        |

**Q.No:94:- What does GPS stand for?**

- |                               |                                 |
|-------------------------------|---------------------------------|
| (A) Global Positioning System | (B) General Processing Software |
| (C) Google Protection Service | (D) Global Product Sales        |

**Q.No:95:- What is a smartwatch?**

- |   |                      |
|---|----------------------|
| (A) A wireless router                   | (B) A gaming console |
| (C) A digital watch with smart features | (D) A robot          |

**Q.No:96:- What does a 3D printer do?**

- |                      |                                       |
|----------------------|---------------------------------------|
| (A) Prints documents | (B) Creates three-dimensional objects |
| (C) Scans barcodes   | (D) Takes photos                      |

**Q.No:97:- What part of a computer stores all the files and data?**

- |                |              |
|----------------|--------------|
| (A) Monitor    | (B) Keyboard |
| (C) Hard drive | (D) Speaker  |

**Q.No:98:- Which of these is NOT an example of an AI assistant?**

- |                      |                     |
|----------------------|---------------------|
| (A) Siri             | (B) Alexa           |
| (C) Google Assistant | (D) Microsoft Excel |

**Q.No:99:- What do we call harmful software that can damage a computer?**

- |              |              |
|--------------|--------------|
| (A) Virus    | (B) Hardware |
| (C) Internet | (D) Browser  |

**Q.No:100:- What is a drone?**

- |                                       |                                    |
|---------------------------------------|------------------------------------|
| (A) A remote-controlled flying device | (B) A type of smart home assistant |
| (C) A virtual reality headset         | (D) A video game console           |

**Q.No:101:- What is 12 X 8?**

- |         |        |
|---------|--------|
| (A) 84  | (B) 96 |
| (C) 108 | (D) 88 |

**Q.No:102:- What is the place value of 7 in 7,843?**

- |              |               |
|--------------|---------------|
| (A) Hundreds | (B) Thousands |
| (C) Tens     | (D) Ones      |

**Q.No:103:- What is the sum of the angles in a triangle?**

- |          |          |
|----------|----------|
| (A) 90°  | (B) 360° |
| (C) 180° | (D) 270° |

**Q.No:104:- If a rectangle has a length of 12 cm and a width of 5 cm, what is its area?**

- |                        |                        |
|------------------------|------------------------|
| (A) 60 cm <sup>2</sup> | (B) 24 cm <sup>2</sup> |
| (C) 34 cm <sup>2</sup> | (D) 17 cm <sup>2</sup> |

**Q.No:105:- What is  $3.5 \times 2$ ?**

- |       |       |
|-------|-------|
| (A) 5 | (B) 6 |
| (C) 7 | (D) 8 |

**Q.No:106:- Which number is a prime number?**

- |        |        |
|--------|--------|
| (A) 9  | (B) 15 |
| (C) 17 | (D) 21 |

**Q.No:107:- What is  $100 \div 4$ ?**

- |        |        |
|--------|--------|
| (A) 20 | (B) 25 |
| (C) 30 | (D) 40 |

**Q.No:108:- What is the perimeter of a square with a side length of 6 cm?**

- |           |           |
|-----------|-----------|
| (A) 12 cm | (B) 18 cm |
| (C) 24 cm | (D) 36 cm |

**Q.No:109:- What is  $3^2$  (3 squared)?**

- |        |        |
|--------|--------|
| (A) 6  | (B) 9  |
| (C) 12 | (D) 27 |

**Q.No:110:- If  $8 \times X = 64$ , what is X?**

- |       |       |
|-------|-------|
| (A) 6 | (B) 7 |
| (C) 8 | (D) 9 |

**Q.No:111:- What is  $\frac{4}{5}$  of 50?**

- |        |        |
|--------|--------|
| (A) 20 | (B) 30 |
| (C) 40 | (D) 50 |

**Q.No:112:- What is the smallest prime number?**

- |       |       |
|-------|-------|
| (A) 0 | (B) 1 |
| (C) 2 | (D) 3 |

**Q.No:113:- How many centimeters are in 1 meter?**

- |          |         |
|----------|---------|
| (A) 10   | (B) 100 |
| (C) 1000 | (D) 50  |

**Q.No:114:- If a train travels 60 km in 2 hours, what is its speed?**

- |             |              |
|-------------|--------------|
| (A) 30 km/h | (B) 60 km/h  |
| (C) 90 km/h | (D) 120 km/h |

**Q.No:115:- What is the next number in the pattern: 3, 6, 9, 12, \_\_?**

- |        |        |
|--------|--------|
| (A) 13 | (B) 15 |
| (C) 18 | (D) 21 |

**Q.No:116:- How many edges does a cube have?**

- |        |        |
|--------|--------|
| (A) 6  | (B) 8  |
| (C) 12 | (D) 16 |

**Q.No:117:- What is  $45 \div 9$ ?**

- |       |       |
|-------|-------|
| (A) 4 | (B) 5 |
| (C) 6 | (D) 7 |

**Q.No:118:- If a pizza is cut into 8 equal slices, how many slices make up half the pizza?**

- |       |       |
|-------|-------|
| (A) 2 | (B) 3 |
| (C) 4 | (D) 5 |

**Q.No:119:- What is  $4^3$  (4 cubed)?**

- |        |        |
|--------|--------|
| (A) 8  | (B) 12 |
| (C) 16 | (D) 64 |

**Q.No:120:- If a box has 36 apples and you put them into groups of 4, how many groups are there?**

- |       |        |
|-------|--------|
| (A) 8 | (B) 6  |
| (C) 9 | (D) 12 |



**Q.No:121:- What is the decimal equivalent of  $\frac{1}{2}$ ?**

- |         |          |
|---------|----------|
| (A) 0.2 | (B) 0.25 |
| (C) 0.5 | (D) 0.75 |

**Q.No:122:- What is the largest two-digit number?**

- |        |        |
|--------|--------|
| (A) 89 | (B) 88 |
| (C) 98 | (D) 99 |

**Q.No:123:- If a triangle has sides of 3 cm, 4 cm, and 5 cm, what type of triangle is it?**

- |                 |                  |
|-----------------|------------------|
| (A) Equilateral | (B) Isosceles    |
| (C) Scalene     | (D) Right-angled |

**Q.No:124:- What is the perimeter of a rectangle with length 10 cm and width 4 cm?**

- |           |           |
|-----------|-----------|
| (A) 14 cm | (B) 20 cm |
| (C) 28 cm | (D) 40 cm |

**Q.No:125:- What is  $5!$  (5 factorial)?**

- |         |         |
|---------|---------|
| (A) 15  | (B) 25  |
| (C) 120 | (D) 720 |

**Q.No:126:- Which number is divisible by both 2 and 3?**

- |        |        |
|--------|--------|
| (A) 9  | (B) 12 |
| (C) 15 | (D) 17 |

**Q.No:127:- What is the square root of 64?**

- |       |       |
|-------|-------|
| (A) 8 | (B) 9 |
| (C) 6 | (D) 7 |

**Q.No:128:- How many faces does a rectangular prism have?**

- |       |        |
|-------|--------|
| (A) 4 | (B) 6  |
| (C) 8 | (D) 10 |

**Q.No:129:- Convert 250 cm to meters.**

- |            |            |
|------------|------------|
| (A) 2.5 m  | (B) 25 m   |
| (C) 2500 m | (D) 0.25 m |

**Q.No:130:- What is  $1.25 + 2.75$ ?**

- |         |       |
|---------|-------|
| (A) 3.5 | (B) 4 |
| (C) 4.5 | (D) 5 |

**Q.No:131:- Which unit is used to measure weight?**

- |              |            |
|--------------|------------|
| (A) Liter    | (B) Meter  |
| (C) Kilogram | (D) Second |

**Q.No:132:- What is  $144 \div 12$ ?**

- |        |        |
|--------|--------|
| (A) 10 | (B) 12 |
| (C) 14 | (D) 16 |

**Q.No:133:- A clock shows 3:45 PM. What is this in 24-hour format?**

- |              |              |
|--------------|--------------|
| (A) 13:45:00 | (B) 14:45:00 |
| (C) 15:45:00 | (D) 16:45:00 |

**Q.No:134:- A cube has how many vertices (corners)?**

- |        |        |
|--------|--------|
| (A) 6  | (B) 8  |
| (C) 10 | (D) 12 |

**Q.No:135:- What is the next prime number after 23?**

- |        |        |
|--------|--------|
| (A) 24 | (B) 25 |
| (C) 27 | (D) 29 |

**Q.No:136:- What is the remainder when 25 is divided by 4?**

- |       |       |
|-------|-------|
| (A) 0 | (B) 1 |
| (C) 2 | (D) 3 |

**Q.No:137:- What is the sum of 234 and 567?**

- |         |          |
|---------|----------|
| (A) 701 | (B) 801  |
| (C) 901 | (D) 1001 |

**Q.No:138:- What is the value of  $5 \times (6 + 4)$ ?**

- |        |        |
|--------|--------|
| (A) 30 | (B) 40 |
| (C) 50 | (D) 60 |

**Q.No:139:- If a square has an area of  $49 \text{ cm}^2$ , what is the length of one side?**

- |          |          |
|----------|----------|
| (A) 6 cm | (B) 7 cm |
| (C) 8 cm | (D) 9 cm |

**Q.No:140:- What is 20% of 150?**

- |        |        |
|--------|--------|
| (A) 20 | (B) 30 |
| (C) 40 | (D) 50 |

**Q.No:141:- How many degrees is a straight angle?**

- |                 |                 |
|-----------------|-----------------|
| (A) $45^\circ$  | (B) $90^\circ$  |
| (C) $180^\circ$ | (D) $360^\circ$ |

**Q.No:142:- What is the decimal equivalent of  $\frac{3}{4}$ ?**

- |          |         |
|----------|---------|
| (A) 0.5  | (B) 0.6 |
| (C) 0.75 | (D) 0.8 |

**Q.No:143:- What is  $15 \times 15$ ?**

- |         |         |
|---------|---------|
| (A) 200 | (B) 225 |
| (C) 250 | (D) 275 |

**Q.No:144:- How many milliliters are in 2.5 liters?**

- |               |                |
|---------------|----------------|
| (A) 250 ml    | (B) 2,500 ml   |
| (C) 25,000 ml | (D) 250,000 ml |

**Q.No:145:- What is the perimeter of an equilateral triangle with a side length of 9 cm?**

- |           |           |
|-----------|-----------|
| (A) 18 cm | (B) 27 cm |
| (C) 36 cm | (D) 45 cm |

**Q.No:146:- If  $3y = 24$ , what is the value of  $y$ ?**

- |       |       |
|-------|-------|
| (A) 6 | (B) 7 |
| (C) 8 | (D) 9 |

**Q.No:147:- What is the next number in the sequence: 2, 4, 8, 16, \_\_?**

- |        |        |
|--------|--------|
| (A) 24 | (B) 32 |
| (C) 40 | (D) 48 |

**Q.No:148:- A rope is 24 meters long. If it is cut into 6 equal pieces, how long is each piece?**

- |         |         |
|---------|---------|
| (A) 3 m | (B) 4 m |
| (C) 5 m | (D) 6 m |

**Q.No:149:- What is the greatest common factor (GCF) of 18 and 24?**

- |       |       |
|-------|-------|
| (A) 2 | (B) 3 |
| (C) 6 | (D) 9 |

**Q.No:150:- If a book costs \$8.50 and you buy 3 books, how much do you have to pay?**

- |        |          |
|--------|----------|
| (A) 24 | (B) 25.5 |
| (C) 26 | (D) 28.5 |

**Q.No:151:- What has to be broken before you can use it?**

- |            |          |
|------------|----------|
| (A) Glass  | (B) Door |
| (C) Mirror | (D) Egg  |

**Q.No:152:- The more of me you take, the more you leave behind. What am I?**

- |          |               |
|----------|---------------|
| (A) Time | (B) Footsteps |
| (C) Air  | (D) Water     |

**Q.No:153:- I have hands but can't clap. What am I?**

- |           |            |
|-----------|------------|
| (A) Clock | (B) Robot  |
| (C) Doll  | (D) Statue |

**Q.No:154:- The more you remove from me, the bigger I get. What am I?**

- |           |              |
|-----------|--------------|
| (A) Hole  | (B) Balloon  |
| (C) Cloud | (D) Mountain |

**Q.No:155:- What comes once in a minute, twice in a moment, but never in a thousand years?**

- |                    |              |
|--------------------|--------------|
| (A) The letter "M" | (B) A shadow |
| (C) A breath       | (D) A second |

**Q.No:156:- What has a face but no eyes, mouth, or nose?**

- |            |             |
|------------|-------------|
| (A) A wall | (B) A clock |
| (C) A doll | (D) A coin  |

**Q.No:157:- What has keys but can't open locks?**

- |                |                      |
|----------------|----------------------|
| (A) A piano    | (B) A treasure chest |
| (C) A keyboard | (D) A door           |

**Q.No:158:- I have no life, but I can die. What am I?**

- |               |              |
|---------------|--------------|
| (A) A plant   | (B) A shadow |
| (C) A battery | (D) A candle |

**Q.No:159:- What has an eye but cannot see?**

- |               |              |
|---------------|--------------|
| (A) A cyclops | (B) A storm  |
| (C) A needle  | (D) A mirror |

**Q.No:160:- What has legs but doesn't walk?**

- |                |             |
|----------------|-------------|
| (A) A spider   | (B) A table |
| (C) A kangaroo | (D) A car   |

**Q.No:161:- What can travel around the world while staying in the same spot?**

- |               |             |
|---------------|-------------|
| (A) A shadow  | (B) A stamp |
| (C) A compass | (D) The sun |

**Q.No:162:- The more you use me, the thinner I become. What am I?**

- |              |              |
|--------------|--------------|
| (A) A candle | (B) A pencil |
| (C) A rope   | (D) A book   |

**Q.No:163:- I have teeth but cannot eat. What am I?**

- |             |            |
|-------------|------------|
| (A) A saw   | (B) A dog  |
| (C) A shark | (D) A comb |

**Q.No:164:- What gets wetter as it dries?**

- |              |             |
|--------------|-------------|
| (A) A sponge | (B) A towel |
| (C) A fish   | (D) A cloud |

**Q.No:165:- What has a neck but no head?**

- |              |               |
|--------------|---------------|
| (A) A snake  | (B) A bottle  |
| (C) A guitar | (D) A giraffe |

**Q.No:166:- What can run but never walks?**

- |           |              |
|-----------|--------------|
| (A) A dog | (B) A river  |
| (C) A car | (D) A shadow |

**Q.No:167:- What belongs to you, but others use it more than you do?**

- |                |                |
|----------------|----------------|
| (A) Your phone | (B) Your house |
| (C) Your shoes | (D) Your name  |

**Q.No:168:- What has 13 hearts but no other organs?**

- |                     |              |
|---------------------|--------------|
| (A) A deck of cards | (B) A human  |
| (C) A clock         | (D) A school |

**Q.No:169:- If you drop me, I will crack. If you smile at me, I will smile back. What am I?**

- |              |               |
|--------------|---------------|
| (A) A mirror | (B) A balloon |
| (C) A friend | (D) A sun     |

**Q.No:170:- What has a thumb and four fingers but is not alive?**

- |              |             |
|--------------|-------------|
| (A) A mitten | (B) A glove |
| (C) A statue | (D) A robot |

**Q.No:171:- I go up but never come down. What am I?**

- |               |                   |
|---------------|-------------------|
| (A) A kite    | (B) Your age      |
| (C) A balloon | (D) A thermometer |

**Q.No:172:- What has ears but cannot hear?**

- |                 |                      |
|-----------------|----------------------|
| (A) A rabbit    | (B) A hat            |
| (C) A cornfield | (D) A stuffed animal |

**Q.No:173:- What has words but never speaks?**

- |                 |             |
|-----------------|-------------|
| (A) A newspaper | (B) A radio |
| (C) A person    | (D) A clock |

**Q.No:174:- What can be cracked, made, told, and played?**

- |               |            |
|---------------|------------|
| (A) A joke    | (B) An egg |
| (C) A balloon | (D) A song |

**Q.No:175:- What has a head and a tail but no body?**

- |            |             |
|------------|-------------|
| (A) A fish | (B) A snake |
| (C) A coin | (D) A chair |

**Q.No:176:- What has many rings but no fingers?**

- |                |                 |
|----------------|-----------------|
| (A) A bell     | (B) A telephone |
| (C) A bracelet | (D) A tree      |

**Q.No:177:- What starts with T, ends with T, and has T in it?**

- |              |                 |
|--------------|-----------------|
| (A) A top    | (B) A train     |
| (C) A teapot | (D) A telescope |

**Q.No:178:- What has four wheels and flies?**

- |                 |                     |
|-----------------|---------------------|
| (A) A car       | (B) A garbage truck |
| (C) An airplane | (D) A bus           |

**Q.No:179:- If two's company and three's a crowd, what are four and five?**

- |             |             |
|-------------|-------------|
| (A) A party | (B) A dozen |
| (C) A team  | (D) Nine    |

**Q.No:180:- What has no beginning, middle, or end?**

- |              |             |
|--------------|-------------|
| (A) A book   | (B) A clock |
| (C) A circle | (D) A road  |

**Q.No:181:- What has an endless amount of letters?**

- |               |                  |
|---------------|------------------|
| (A) A mailbox | (B) A dictionary |
| (C) A library | (D) An email     |

**Q.No:182:- What can fill a room but takes up no space?**

- |           |              |
|-----------|--------------|
| (A) Air   | (B) Light    |
| (C) Sound | (D) A shadow |

**Q.No:183:- What has one head, one foot, and four legs?**

- |             |             |
|-------------|-------------|
| (A) A chair | (B) A bed   |
| (C) A table | (D) A horse |

**Q.No:184:- I have cities but no houses, forests but no trees, and rivers but no water. What am I?**

- |             |                  |
|-------------|------------------|
| (A) A globe | (B) A book       |
| (C) A map   | (D) A video game |



**Q.No:185:- What gets sharper the more you use it?**

- |              |             |
|--------------|-------------|
| (A) A pencil | (B) A brain |
| (C) A knife  | (D) A saw   |

**Q.No:186:- I fly without wings. I cry without eyes. What am I?**

- |              |             |
|--------------|-------------|
| (A) A bird   | (B) A storm |
| (C) A dragon | (D) A dream |

**Q.No:187:- You see me once in June, twice in November, and not at all in May. What am I?**

- |                    |              |
|--------------------|--------------|
| (A) The letter "E" | (B) A shadow |
| (C) A day          | (D) A star   |

**Q.No:188:- What comes down but never goes up?**

- |               |               |
|---------------|---------------|
| (A) A balloon | (B) A rock    |
| (C) Rain      | (D) A feather |

**Q.No:189:- The more you stretch me, the thinner I become. What am I?**

- |                   |             |
|-------------------|-------------|
| (A) A rubber band | (B) A rope  |
| (C) A balloon     | (D) A cloud |

**Q.No:190:- What has many holes but still holds water?**

- |              |              |
|--------------|--------------|
| (A) A net    | (B) A sponge |
| (C) A bucket | (D) A cup    |

**Q.No:191:- What begins with an 'e' and only contains one letter?**

- |                 |                 |
|-----------------|-----------------|
| (A) An email    | (B) An envelope |
| (C) An elephant | (D) A book      |

**Q.No:192:- I have keys but open no locks. What am I?**

- |                         |                |
|-------------------------|----------------|
| (A) A treasure chest    | (B) A suitcase |
| (C) A computer keyboard | (D) A door     |

**Q.No:193:- What has four eyes but can't see?**

- |              |                              |
|--------------|------------------------------|
| (A) A spider | (B) A Mississippi (the word) |
| (C) A mask   | (D) A car                    |

**Q.No:194:- What can you catch but not throw?**

- |            |              |
|------------|--------------|
| (A) A ball | (B) A cold   |
| (C) A fish | (D) A shadow |

**Q.No:195:- What has many words but never speaks?**

- |                  |              |
|------------------|--------------|
| (A) A book       | (B) A radio  |
| (C) A television | (D) A parrot |

**Q.No:196:- What has feet but doesn't walk?**

- |             |                |
|-------------|----------------|
| (A) A clock | (B) A ruler    |
| (C) A bed   | (D) A mountain |

**Q.No:197:- The more you share me, the less you have. What am I?**

- |              |              |
|--------------|--------------|
| (A) Money    | (B) A secret |
| (C) A puzzle | (D) A dream  |

**Q.No:198:- The more you peel me, the more you cry. What am I?**

- |              |               |
|--------------|---------------|
| (A) A banana | (B) An onion  |
| (C) A potato | (D) A coconut |

**Q.No:199:- I have branches, but no trunk, leaves, or fruit. What am I?**

- |                  |                 |
|------------------|-----------------|
| (A) A tree       | (B) A bookshelf |
| (C) A coral reef | (D) A bank      |

**Q.No:200:- I have no bones and no legs, but if you keep me warm, I will soon walk away. What am I?**

- |              |            |
|--------------|------------|
| (A) A cloud  | (B) Ice    |
| (C) A shadow | (D) A wave |

## ANSWER KEYS

Q.No:1 - B	Q.No:44 - C	Q.No:87 - C	Q.No:130 - B	Q.No:173 - A
Q.No:2 - C	Q.No:45 - B	Q.No:88 - A	Q.No:131 - C	Q.No:174 - A
Q.No:3 - B	Q.No:46 - D	Q.No:89 - C	Q.No:132 - B	Q.No:175 - C
Q.No:4 - B	Q.No:47 - A	Q.No:90 - B	Q.No:133 - C	Q.No:176 - B
Q.No:5 - D	Q.No:48 - C	Q.No:91 - C	Q.No:134 - B	Q.No:177 - C
Q.No:6 - C	Q.No:49 - C	Q.No:92 - B	Q.No:135 - D	Q.No:178 - B
Q.No:7 - C	Q.No:50 - B	Q.No:93 - A	Q.No:136 - C	Q.No:179 - D
Q.No:8 - B	Q.No:51 - C	Q.No:94 - A	Q.No:137 - B	Q.No:180 - C
Q.No:9 - C	Q.No:52 - C	Q.No:95 - C	Q.No:138 - B	Q.No:181 - A
Q.No:10 - C	Q.No:53 - B	Q.No:96 - B	Q.No:139 - B	Q.No:182 - B
Q.No:11 - A	Q.No:54 - B	Q.No:97 - C	Q.No:140 - B	Q.No:183 - B
Q.No:12 - B	Q.No:55 - D	Q.No:98 - D	Q.No:141 - C	Q.No:184 - C
Q.No:13 - A	Q.No:56 - C	Q.No:99 - A	Q.No:142 - C	Q.No:185 - B
Q.No:14 - D	Q.No:57 - D	Q.No:100 - A	Q.No:143 - B	Q.No:186 - B
Q.No:15 - B	Q.No:58 - A	Q.No:101 - B	Q.No:144 - B	Q.No:187 - A
Q.No:16 - C	Q.No:59 - B	Q.No:102 - B	Q.No:145 - B	Q.No:188 - C
Q.No:17 - D	Q.No:60 - A	Q.No:103 - C	Q.No:146 - A	Q.No:189 - A
Q.No:18 - D	Q.No:61 - C	Q.No:104 - A	Q.No:147 - B	Q.No:190 - B
Q.No:19 - B	Q.No:62 - C	Q.No:105 - C	Q.No:148 - A	Q.No:191 - B
Q.No:20 - C	Q.No:63 - D	Q.No:106 - C	Q.No:149 - C	Q.No:192 - C
Q.No:21 - A	Q.No:64 - A	Q.No:107 - B	Q.No:150 - B	Q.No:193 - B
Q.No:22 - B	Q.No:65 - B	Q.No:108 - C	Q.No:151 - D	Q.No:194 - B
Q.No:23 - D	Q.No:66 - C	Q.No:109 - B	Q.No:152 - B	Q.No:195 - A
Q.No:24 - A	Q.No:67 - B	Q.No:110 - C	Q.No:153 - A	Q.No:196 - B
Q.No:25 - C	Q.No:68 - C	Q.No:111 - C	Q.No:154 - A	Q.No:197 - B
Q.No:26 - C	Q.No:69 - B	Q.No:112 - C	Q.No:155 - A	Q.No:198 - B
Q.No:27 - B	Q.No:70 - B	Q.No:113 - B	Q.No:156 - B	Q.No:199 - D
Q.No:28 - D	Q.No:71 - A	Q.No:114 - A	Q.No:157 - A	Q.No:200 - B
Q.No:29 - C	Q.No:72 - A	Q.No:115 - B	Q.No:158 - C	
Q.No:30 - A	Q.No:73 - C	Q.No:116 - C	Q.No:159 - C	
Q.No:31 - A	Q.No:74 - B	Q.No:117 - B	Q.No:160 - B	
Q.No:32 - B	Q.No:75 - B	Q.No:118 - C	Q.No:161 - B	
Q.No:33 - C	Q.No:76 - C	Q.No:119 - D	Q.No:162 - B	
Q.No:34 - B	Q.No:77 - A	Q.No:120 - A	Q.No:163 - A	
Q.No:35 - C	Q.No:78 - B	Q.No:121 - C	Q.No:164 - B	
Q.No:36 - C	Q.No:79 - D	Q.No:122 - D	Q.No:165 - B	
Q.No:37 - C	Q.No:80 - B	Q.No:123 - D	Q.No:166 - B	
Q.No:38 - D	Q.No:81 - C	Q.No:124 - C	Q.No:167 - D	
Q.No:39 - C	Q.No:82 - B	Q.No:125 - C	Q.No:168 - A	
Q.No:40 - C	Q.No:83 - A	Q.No:126 - B	Q.No:169 - A	
Q.No:41 - B	Q.No:84 - B	Q.No:127 - A	Q.No:170 - B	
Q.No:42 - A	Q.No:85 - A	Q.No:128 - B	Q.No:171 - B	
Q.No:43 - B	Q.No:86 - B	Q.No:129 - A	Q.No:172 - C	

**TSD - Head Office: July Building, Dama  
Street, Muscat, Oman.  
Contact No. +968 22093031, Official:  
+968 95243297,  
[www.talentandskillsdevelopment.com](http://www.talentandskillsdevelopment.com)**



**talentandskillsdevelopment  
[www.talentandskillsdevelopment.com](http://www.talentandskillsdevelopment.com)**